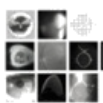


ZEISS CLARLET Z1 F133

HELP FOR PATIENTS WITH PHOTSENSITIVE EPILEPSY FROM DAVID STEPHENSEN OPTOMETRIST



David Stephensen Optometrist

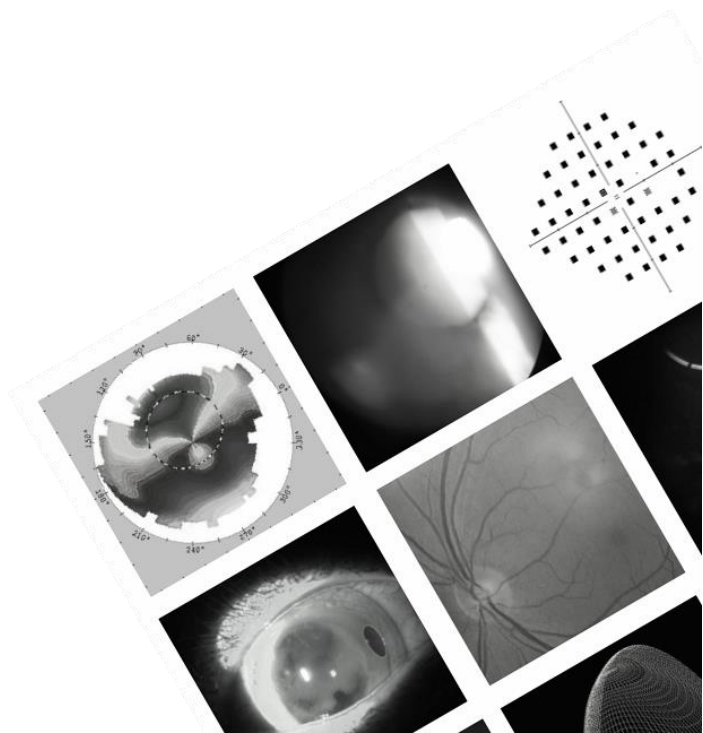
For Confidence in Your Vision

197 Beaudesert Rd, MOOROOKA QLD 4105

P: 07 3848 8979

E: info@dsoptom.com.au

W: www.dsoptom.com.au



ZEISS CLARLET Z1 F133 LENSES FOR PHOTOSENSITIVE EPILEPSY

THIS INFORMATION IS PROVIDED TO ASSIST PATIENTS WITH PHOTOSENSITIVE EPILEPSY AND THEIR CARERS TO UNDERSTAND THE POSSIBLE BENEFITS OF ZEISS CLARLET Z1 F133 SPECTACLE LENSES IN MANAGING THEIR CONDITION. PLEASE DISCUSS THIS WITH YOUR NEUROLOGIST OR MEDICAL PRACTITIONER AS TO WHETHER THESE SPECTACLE LENSES MAY ASSIST YOUR PARTICULAR FORM OF EPILEPSY.



ZEISS CLARLET Z1 F133 LENSES FOR PHOTSENSITIVE EPILEPSY

DAVID STEPHENSEN

B.APP.SC(HONS)(OPTOM) B.BUS GRAD CERT OC THER
FELLOW OF THE CORNEA AND CONTACT LENS SOCIETY OF AUSTRALIA

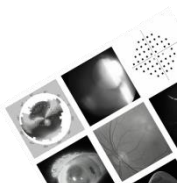
DAVID IS PASSIONATE ABOUT HELPING PATIENTS TO BECOME MORE CONFIDENT IN THEIR VISION

DAVID HAS DEVELOPED AN INTEREST IN PROVIDING SPECIALISED SOLUTIONS TO COMPLEX EYE AND VISION PROBLEMS. HE ENJOYS THE CHALLENGE OF FINDING OR DEVELOPING SOLUTIONS TO PERMIT PATIENTS TO LIVE THEIR LIVES FREE FROM THE CONSTRAINTS OF THEIR VISUAL DIFFICULTIES.

DAVID ENJOYS PROVIDING CLINICAL EDUCATION THROUGH THE CCLSA, OAA, AND QUT. DAVID IS A LECTURER TO THE QUT MASTERS IN OPTOMETRY COURSE, AND THE QUT GRADUATE CERTIFICATE IN OCULAR THERAPEUTICS. DAVID IS THE CHAIR OF THE CASE REPORTS SECTION OF THE FELLOWSHIP PROGRAM FOR THE CORNEAL AND CONTACT LENS SOCIETY OF AUSTRALIA. DAVID HAS LECTURED AT NATIONAL AND INTERNATIONAL CONFERENCES TO BOTH OPTOMETRISTS AND OPHTHALMOLOGISTS.

DAVID STUDIED UNDERGRADUATE OPTOMETRY AT QUT. FOLLOWING THIS HE COMPLETED A BUSINESS DEGREE IN LOGISTICS AND OPERATIONS MANAGEMENT AT USQ. DAVID WAS PART OF THE FIRST GRADUATING CLASS OF THE QUT GRADUATE CERTIFICATE IN OCULAR THERAPEUTICS. IN 2007, DAVID COMPLETED HIS FELLOWSHIP OF THE CORNEA AND CONTACT LENS SOCIETY OF AUSTRALIA.

DAVID IS A PAST PRESIDENT OF THE CORNEA AND CONTACT LENS SOCIETY OF AUSTRALIA AT BOTH A STATE AND NATIONAL LEVEL.



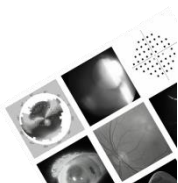
BACKGROUND INFORMATION

IN 2006 A PAPER WAS PUBLISHED IN THE JOURNAL *EPILEPSIA* THAT EXAMINED THE BENEFITS THAT A COMMERCIALY AVAILABLE TINTED SPECTACLE LENS MAY HAVE IN MANAGING SEIZURES. THE LENS USED IN THIS STUDY WAS THE ZEISS CLARLET Z1 F133, AND IT SHOWED A REMARKABLE BENEFIT IN SIGNIFICANTLY REDUCING THE PHOTSENSITIVE EPILEPSY IN 75% OF THE 610 SUBJECTS ASSESSED. THIS FINDING PERMITS THE POSSIBILITY OF PROVIDING ADDITIONAL OR NON-PHARMACOLOGICAL METHOD OF CONTROLLING PHOTSENSITIVE EPILEPSY.

ZEISS CLARLET Z1 F133

THE ZEISS CLARLET Z1 F133 SPECTACLE LENS IS A DEEP BLUE COLOURED LENS THAT TRANSMITS REGULATES THE TRANSMISSION OF LIGHT ACROSS THE VISUAL SPECTRUM. PRIMARILY WAVELENGTHS IN THE BLUE AND GREEN PORTION OF THE VISUAL SPECTRUM ARE TRANSMITTED TO VARYING DEGREES. LIGHT IN THE YELLOW, ORANGE AND PART OF THE RED PORTION OF THE SPECTRUM IS BLOCKED. THE ZEISS CLARLET Z1 F133 SPECTACLE LENSES ARE MANUFACTURED IN ZEISS' PRECISION TINTING LABORATORIES IN AALEN, GERMANY WHERE OVER 7,000 LENSES ARE PRODUCED DAILY FOR MANY PRACTICAL AND THERAPEUTIC USES.

THE ZEISS CLARLET Z1 F133 SPECTACLE LENS IS COSMETICALLY A SIMILAR DENSITY TO A DARK SUNGLASS LENS. IT IS NOT POSSIBLE TO LIGHTEN THE COLOUR OF THESE LENSES WITHOUT AFFECTING THEIR SPECTRUM OF TRANSMISSION. PATIENTS WILL NEED TO ADAPT INITIALLY TO A BLUE CAST OVER OBJECTS. HOWEVER, ONCE THE INITIAL ADAPTATION HAS PASSED MORE NORMAL COLOUR PERCEPTION SHOULD BE ACHIEVED. EDUCATORS OF PATIENTS WHO WEAR ZEISS CLARLET Z1 F133 SPECTACLE LENSES SHOULD BE COUNSELLED THAT PATIENTS WEARING THESE SPECIAL SPECTACLE LENSES MAY HAVE SOME DIFFICULTY PERCEIVING CERTAIN COLOURS. THEREFORE SPECIAL CONSIDERATION MAY BE REQUIRED TO ENSURE THAT EDUCATIONAL INFORMATION IS NOT MISSED IN VISUALLY ORIENTATED PRESENTATIONS.



ALTERNATIVE LENS TINTS

ALTERNATIVE TINT SYSTEMS HAVE BEEN SUGGESTED INCLUDING A LIQUID TINTING PREPARATION FROM BPI CALLED DEEP BLUE ZEE. IT IS WORTH NOTING THAT THE TRANSMISSION SPECTRUM FROM THIS LIQUID TINT IS DIFFERENT FROM THAT OF THE ZEISS CLARLET Z1 F133. ADDITIONALLY, PRECISION TINTING IS NOT EASILY ACHIEVED IN A NORMAL OPTICAL LENS LABORATORY SETTING. CAREFUL CONTROL OF TIMING AND TEMPERATURE ARE REQUIRED TO PRODUCE SPECTACLE LENSES OF THE REQUIRED TRANSMISSION SPECTRUM. THEREFORE THESE PRODUCTS, WHILST THEY MAY BENEFIT SOME WEARERS, ARE NOT EQUIVALENT TO THE ZEISS Z1 F133 SPECTACLE LENSES.

CONSIDERATIONS IN MANUFACTURE

THE USE OF THE ZEISS Z1 F133 SPECTACLES LENSES IN PHOTOSENSITIVE EPILEPSY REQUIRES THAT THERE BE MINIMAL VISIBLE GAPS AROUND THE EDGE OF THE SPECTACLE FRAMES WHEN WORN.

FOR THIS REASON IT IS ADVISED THAT A SLIGHTLY CURVED, LARGE SUNGLASS TYPE FRAME IS USED. IT IS ADVISABLE TO UTILISE A SPECTACLE FRAME THAT CAN BE EASILY RE-PURCHASED FOR THIS PURPOSE AS IT IS MORE LIKELY THAT A CHILD WILL DAMAGE OR BREAK THE SPECTACLE FRAMES BEFORE THEY DAMAGE THE SPECTACLE LENSES. BY USING AN EASILY OBTAINABLE FRAME OF CONSISTENT MANUFACTURING QUALITY THE EXISTING ZEISS Z1 F133 LENSES CAN BE TRANSFERRED TO A NEW FRAME WITHOUT RE-MANUFACTURE OF THE LENSES.

DAVID STEPHENSEN OPTOMETRIST CAN SUPPLY SUITABLE SPECTACLE FRAMES, OR PROVIDE ADVICE AS TO WHICH FRAMES WILL BE SUITABLE FOR USE.

FOR PATIENTS OUTSIDE THE BRISBANE METROPOLITAN AREA WE CAN LIAISE TO SUPPLY DEMONSTRATION OR SAMPLE FRAMES TO TRIAL AT HOME. CAREFUL CONSIDERATION OF THE APPROPRIATE FRAMES IS IMPORTANT IN MAXIMISING THE BENEFICIAL EFFECTS OF THE ZEISS Z1 F133 SPECTACLE LENSES IN ASSISTING PATIENTS WITH PHOTOSENSITIVE EPILEPSY.



CONTACT DETAILS

FOR FURTHER INFORMATION PLEASE CONTACT:

DAVID STEPHENSEN OPTOMETRIST
197 BEAUDESERT RD
MOOROOKA QLD 4105

PHONE: +61 7 3848 8979
EMAIL: INFO@DSOPTOM.COM.AU
WEB: WWW.DSOPTOM.COM.AU

